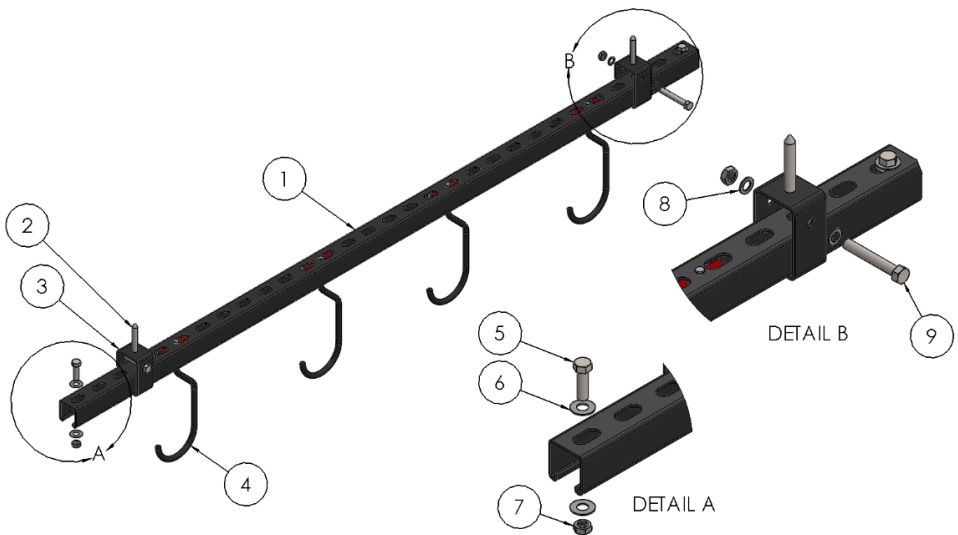


Parts List

- | | |
|---------------------------------|--------------------------------|
| 1) RS Slide Track | 6) 3/8" Large OD Washer |
| 2) 3/8" Wood Lag Screw | 7) 3/8-16 Nylok Nut |
| 3) RS Slide Bracket | 8) 3/8" Small OD Washer |
| 4) RS Slide Trolley Assembly | 9) 3/8-16 x 2.5" Hex Cap Screw |
| 5) 3/8-16 x 1.25" Hex Cap Screw | |



In the Box:

- (1) 5' RS Slide Track
- (2) RS Slide Brackets
- (4) RS Slide Trolley Assemblies
- (1) Trolley Stop Hardware Bag
- (1) Bracket Installation Hardware Bag

Tools Required:

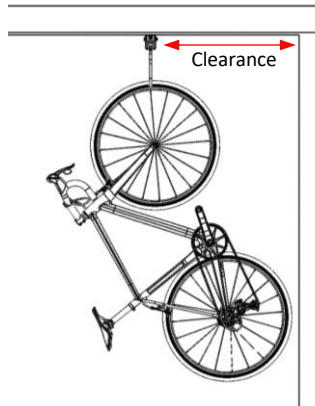
- Drill
- 9/16" Socket and Ratchet
- 9/16" Wrench
- 1/4" Drill Bit
- Tape Measure

Product Notes:

- 50 lb per Trolley Assembly with six trolleys max per 5' section.
- Additional 5' sections, splice brackets and trolleys sold separately.
- RS Standard Slide Trolley Assembly to hold bikes with tires up to 3" wide.
- RS Large Slide Trolley Assembly to hold bikes with tires up to 5" wide.

Step 1:

- Begin by finding ceiling location to hang RS Slide. Keep in mind bike will not hang straight down. Track should be located a minimum of half the diameter of the largest tire to be hung. This will not ensure that lower tire will not hit wall. If space permits, 30" of clearance will cover most bikes with wheelbases up to 50".



Step 2:

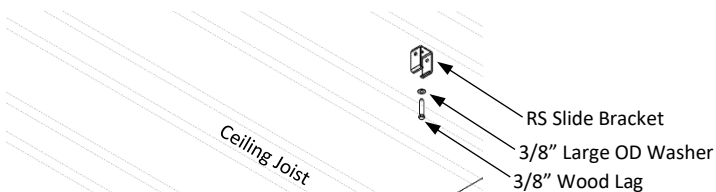
- Once location is set, determine direction of ceiling joists. Two RS Slide Brackets will be installed to support RS Slide Track (determined by joist spacing.)

Note: If track is installed parallel to the ceiling joists, and location falls between two ceiling joists, "spanner boards" may be required to provide solid mounting location (shown below.)

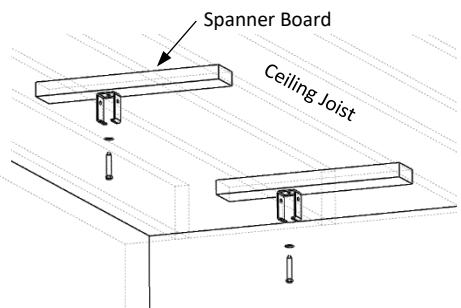
Step 3:

- Drill 1/4" pilot hole for each mounting location approx. 2 1/4" deep.
- Install one 3/8" Lag and 3/8" Large OD Washer per RS Slide Bracket.

Note: Use straight edge to insure brackets are in line with one another.



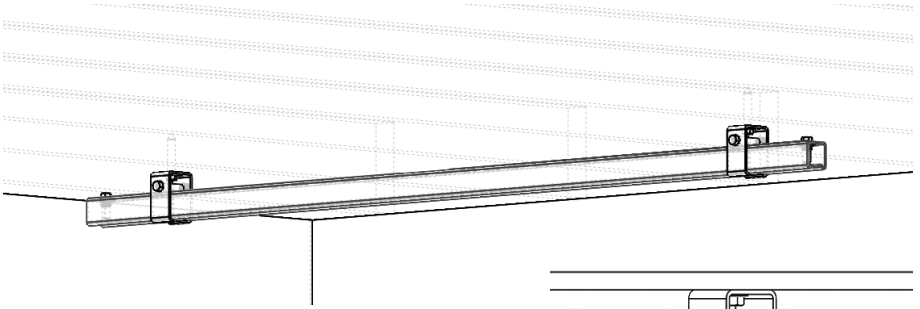
**Track Installed Perpendicular to
Ceiling Joist**



**Track Installed Parallel to
Ceiling Joist**

Step 4:

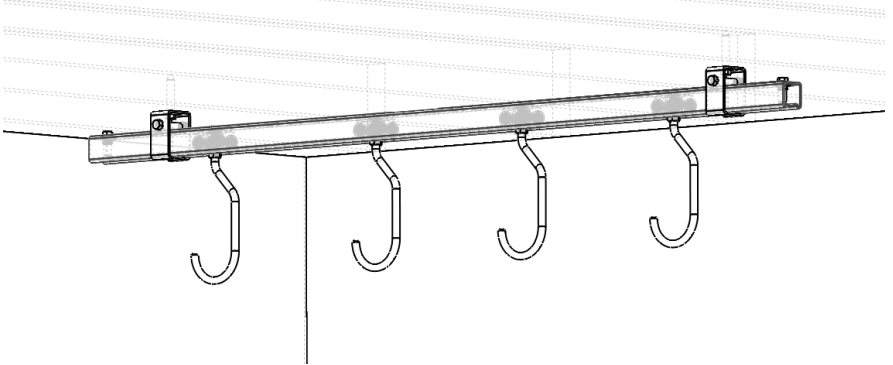
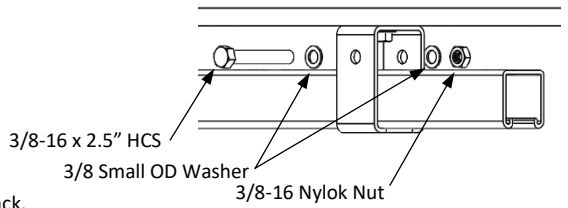
- Slide RS Slide Track into brackets. Equal amount of track should be sticking beyond each bracket if possible.
- Secure track in place by installing Track Bracket Hardware at each bracket.



Step 5:

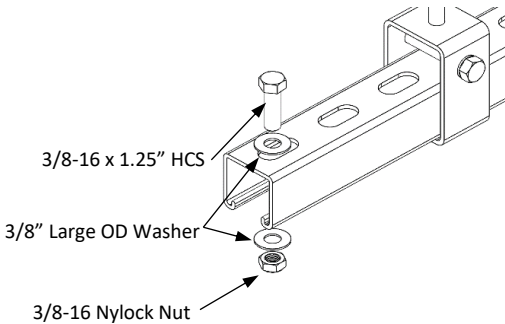
- Insert all RS Slide Trolleys into track.

Note: Four Trolley Assemblies included with each unit. Max of six Trolley Assemblies per unit (Additional Trolley Assemblies sold separately.)



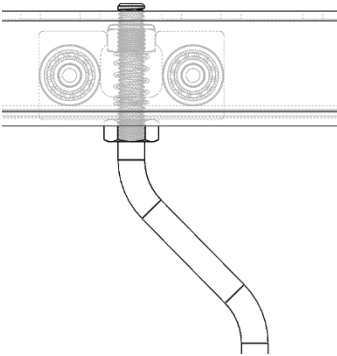
Step 6:

Install Trolley Assembly Stop Hardware at both ends of RS Slide Track.

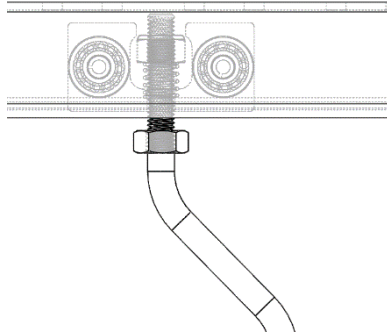


Using RS Slide

- RS Slide Trolley Assemblies are spring loaded and will lock into track slots when no load is applied to hook. This allows for easy bike installation and eliminates side to side and rotational movement.

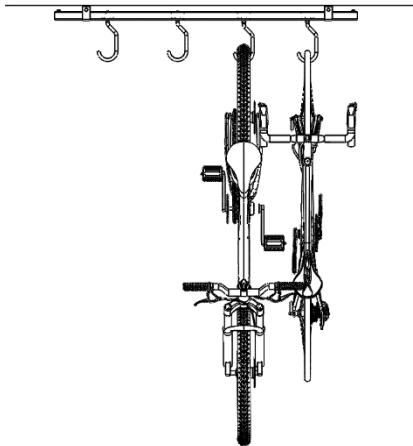


**Trolley Assembly in Locked
Position**



**Trolley Assembly in Unlocked
Position**

- To avoid bike interference, adjacent bike should be hung from opposite tire (front tire vs rear tire.)



Additional Instructions

- Use **caution** while taking steps to install RS Slide.
- Inspect RS Slide periodically to ensure proper working conditions.

Questions or comments? Contact our support team via email at email@1up-usa.com

Warning/Disclaimer

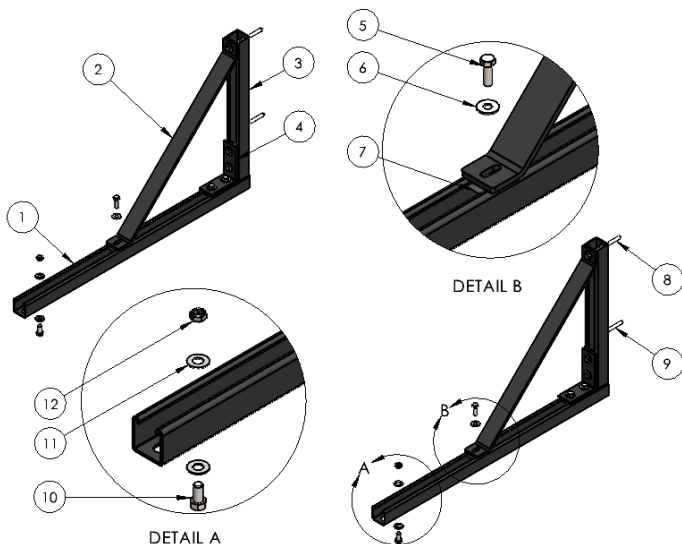
Manufacturer and seller expressly disclaim any and all liability for personal injury, property damage or loss, whether direct, indirect, or incidental, resulting from the incorrect mounting, improper use, inadequate maintenance, or neglect of this system.



RS Slide Wall Mount Assembly

Parts List

- | | |
|--|---------------------------------|
| 1) RS Slide Wall Mount, Horizontal Strut | 7) 5/16-18 Unistrut Nut |
| 2) RS Slide Wall Mount, 45 Degree Strut | 8) 5/16 x 4.5" Wood Lag Screw |
| 3) RS Slide Wall Mount, Vertical Strut | 9) 5/16 x 3" Wood Lag Screw |
| 4) RS Slide Wall Mount, 90 Degree Strut | 10) 3/8-16 x .75" Hex Cap Screw |
| 5) 5/16-18 x 1" Hex Cap Screw | 11) 3/8 USS Washer |
| 6) 5/16 USS Washer | 12) 3/8-16 Nylock Nut |



In the Box:

- (2) RS Slide Wall Mount Assembly
- (1) RS Slide Mounting Hardware Bag
- (1) Installation Hardware Bag

Tools Required:

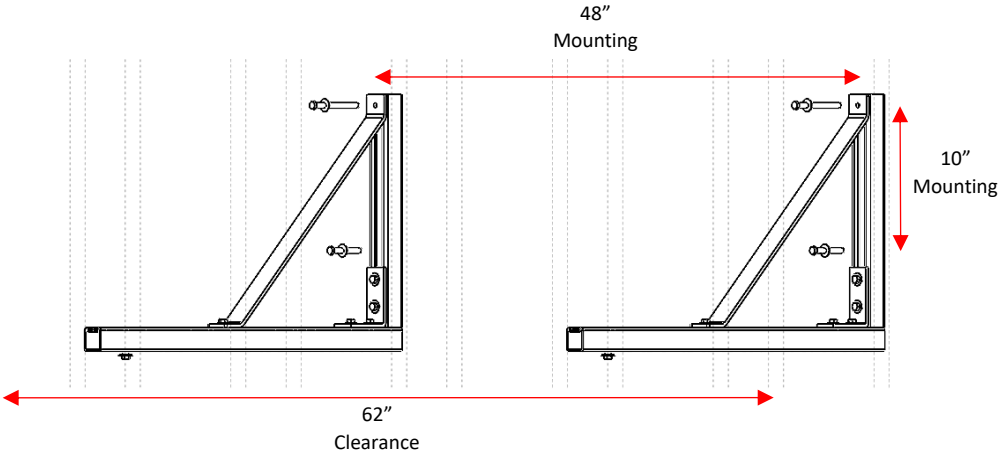
- 1/2" & 9/16" Socket with Ratchet
- 1/2" & 9/16" Wrench
- 9/64" Drill Bit
- Drill
- Level
- Tape Measure

Product Notes:

- 50 lb per Trolley Assembly with six trolleys max per 5' section.
- Unit requires 62" of wall space for mounting (includes RS Slide).
- RS Slide to be mounted on second slot from end of Horizontal Strut.

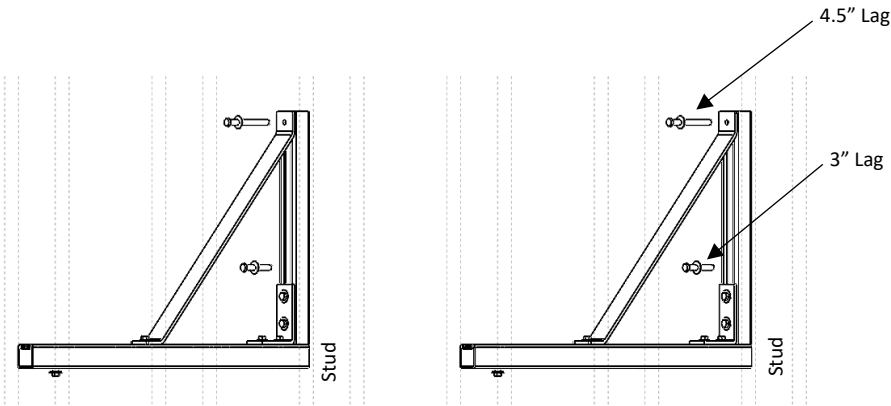
Step 1:

- Unit must be installed into solid surface and requires 48" mounting hole spacing.
- Use level and tape measure to mark and drill 9/64" pilot holes in wall. Mounting requires two holes per bracket (10" center to center).



Step 2:

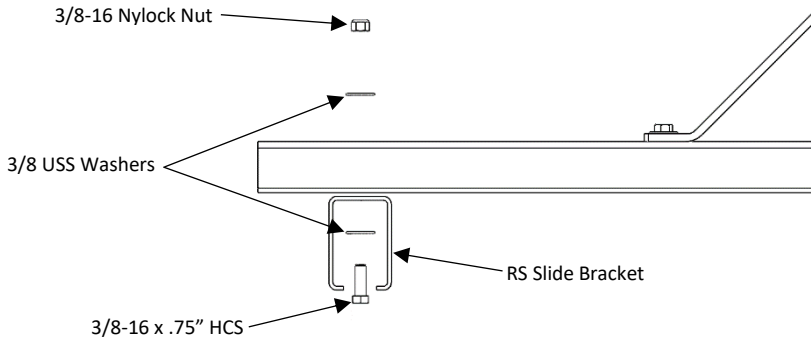
- Use supplied lags and washers to install unit. Tighten lags firmly.
Note: Ensure brackets are installed level to one another.



Step 3:

- Install RS Slide Bracket onto Horizontal Strut using provided hardware.
- Review RS Slide Instructions for additional information.

Note: Use straight edge to ensure RS Slide brackets are in line with one another.



Additional Instructions

- Use **caution** while taking steps to install RS Slide Wall Mount Assembly.
- Inspect RS Slide Wall Mount Assembly periodically to ensure proper working conditions.

Questions or comments? Contact our support team via email at email@1up-usa.com

Warning/Disclaimer

Manufacturer and seller expressly disclaim any and all liability for personal injury, property damage or loss, whether direct, indirect, or incidental, resulting from the incorrect mounting, improper use, inadequate maintenance, or neglect of this system.